



HOW GLOBAL SURGERY IMPACTS THE BED OCCUPANCY RATE OF DISTRICT HOSPITAL AND PATIENTS' ACCESS TO QUALITY HEALTHCARE

¹Mahendran S, ²Thirunyana KV, ³Hasslinda AH, ⁴Umasangar R.

¹Surgical Department, Hospital Taiping, Perak, Malaysia

²Deputy Director, Hospital Gerik, Perak Malaysia

³General Surgeon, Surgical Department, Hospital Taiping, Perak, Malaysia

⁴Head of Department, Surgical Department, Hospital Taiping, Perak, Malaysia



INTRODUCTION

Global surgery is a key aspect of global health.

Definition = a multidisciplinary field aimed in providing improved access to timely, quality, and affordable surgical care, particularly in vulnerable populations.

Global surgery also contributes to the achievement of SDGs 2030.

Adopting the policies and fundamentals of global surgery, this service was also initiated in Hospital Gerik since 2021, in collaboration with Hospital Taiping Surgical Department.

One key reason for this program is the geopolitical landscape which leads to difficult access of the population here to quality surgical care.

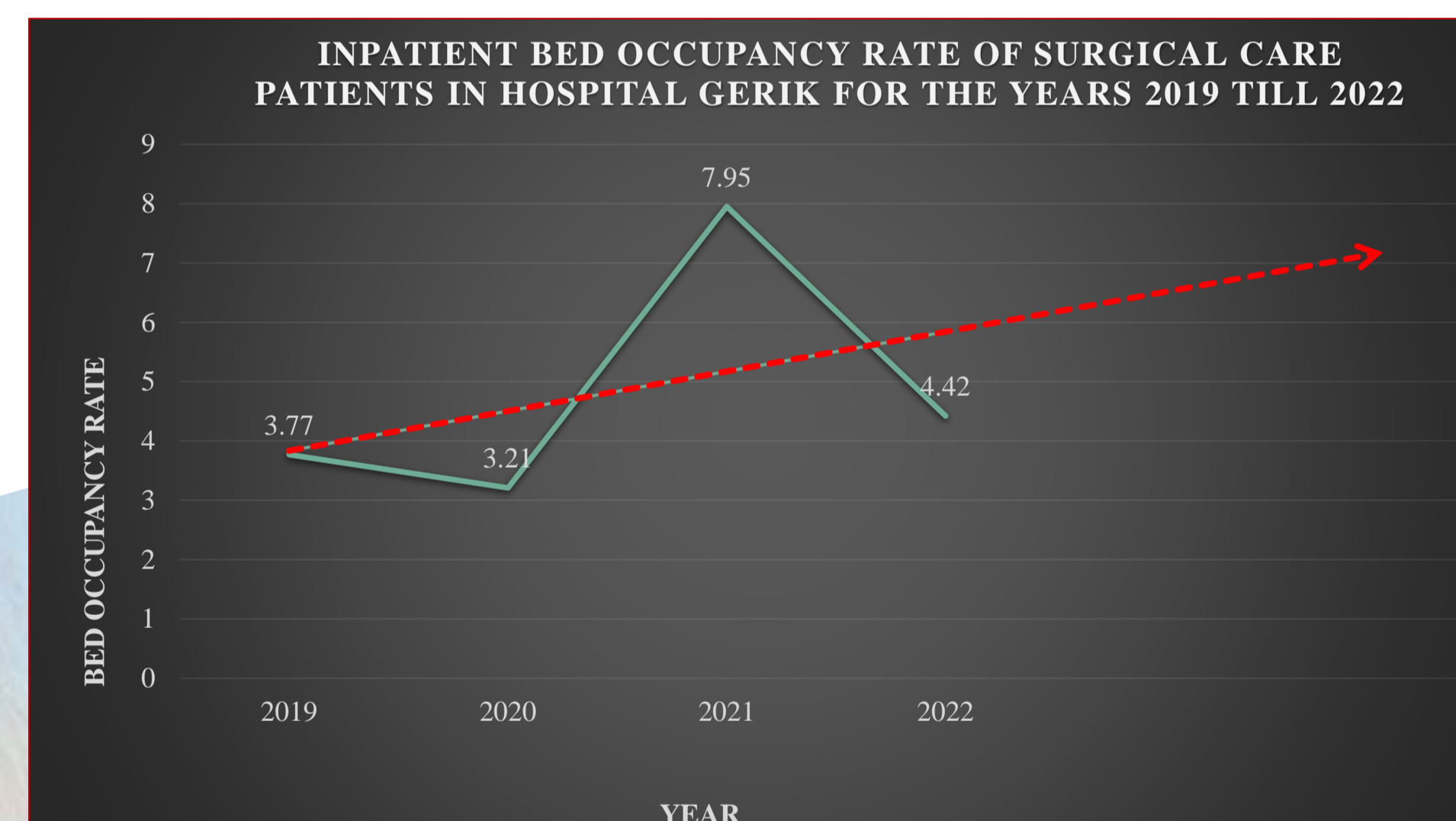
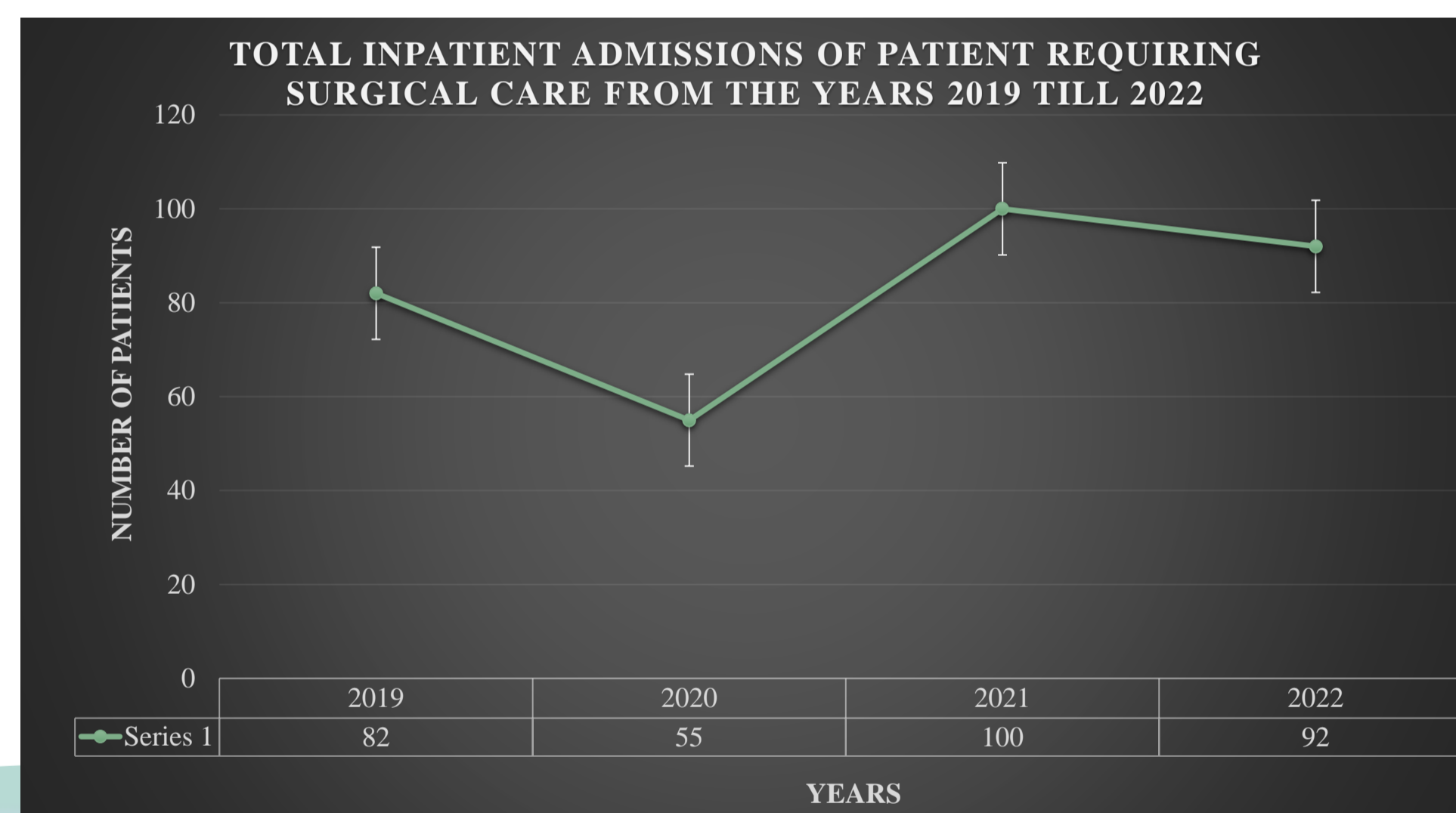
METHODS

Retrospective data of inpatients requiring surgical care from the year 2019 till 2022 were collected.

A total of 8 beds were allocated for surgically managed patients.

Total number of admissions and bed occupancy rate (BOR) were recorded and plotted in a linear graph with comparison made before and after the initiation of Global Surgery Framework (GSF).

RESULTS



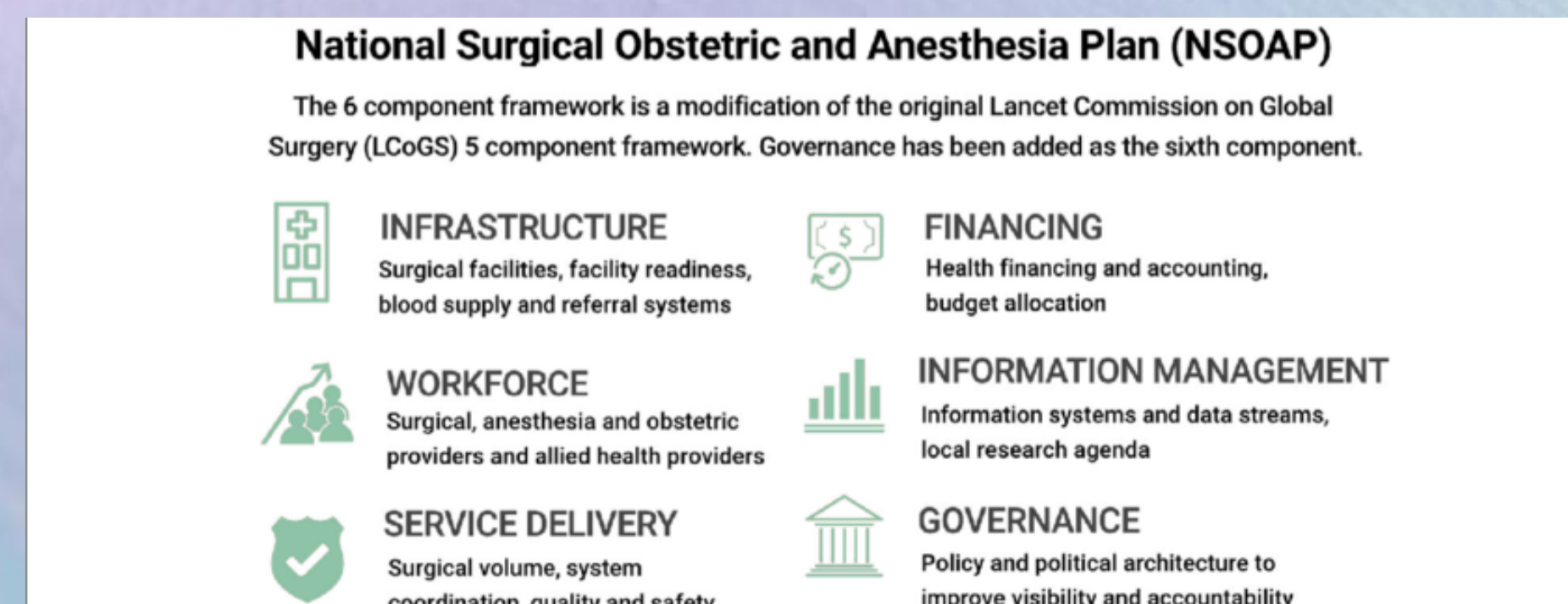
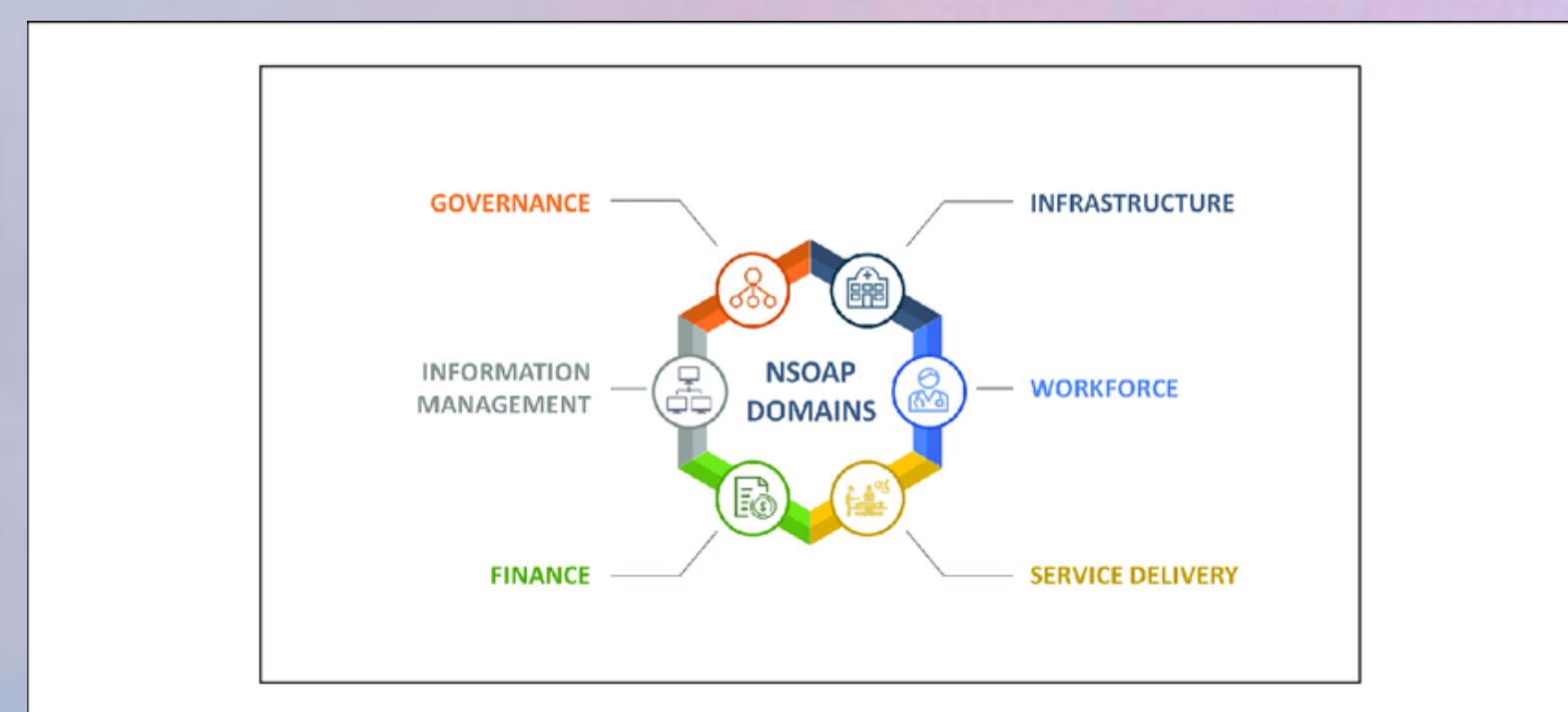
DISCUSSION

GSF in Hospital Gerik showed increment in admission of patients requiring surgical care.

With the presence of a dedicated team on site to bring service closer to the people, patients have easier and better access to such care.

Critically ill, severe and patients requiring advanced intervention can be transferred to a tertiary center after receiving initial resuscitative management.

Further strengthening of the National Surgical Obstetrics and Anesthesia Plan (NSOAP) will contribute the services offered, with higher volume of patients being able to be managed here under GSF.



SDG 2030

