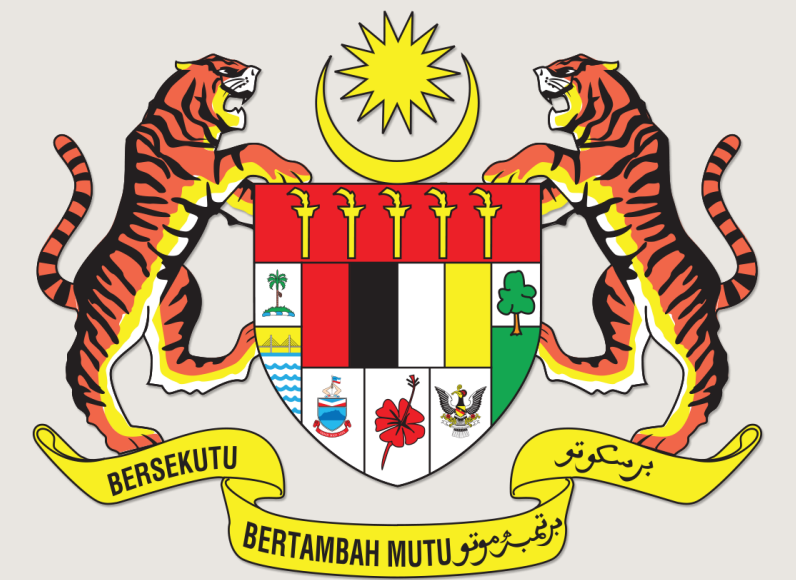


HOSPITAL KLUSTER KEDAH SELATAN AS A CATALYST FOR SUSTAINABLE IMPLEMENTATION OF GLOBAL SURGERY INITIATIVE IN SOUTHERN KEDAH



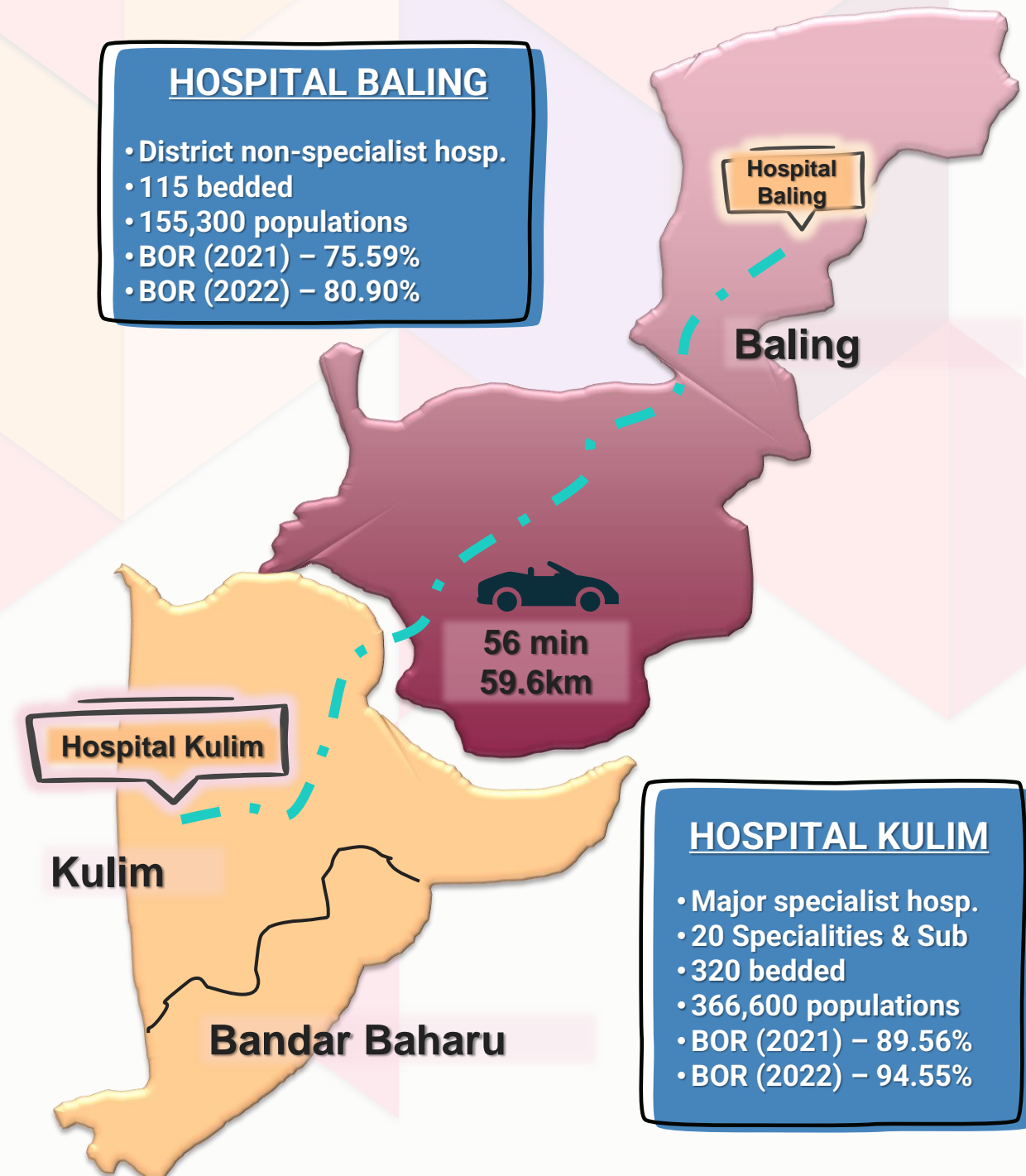
KEMENTERIAN KESIHATAN MALAYSIA

CONTRIBUTING AUTHORS : Dr Kabirurahman A. R.¹; Dr Mithali A.¹; Dr Mohd Ruhaifi A.²; Dr Ainunnadiah D.²; Dr Azmi A. H.¹; Mr Lo G. Y.¹; Dr Wong C. L.¹; Dr Kalatheran S.¹; Dr Nurul Nadhirah A. N.¹; Dr Azhani Haliyati A.Y.²; Hanita M.²; Mahani H.²

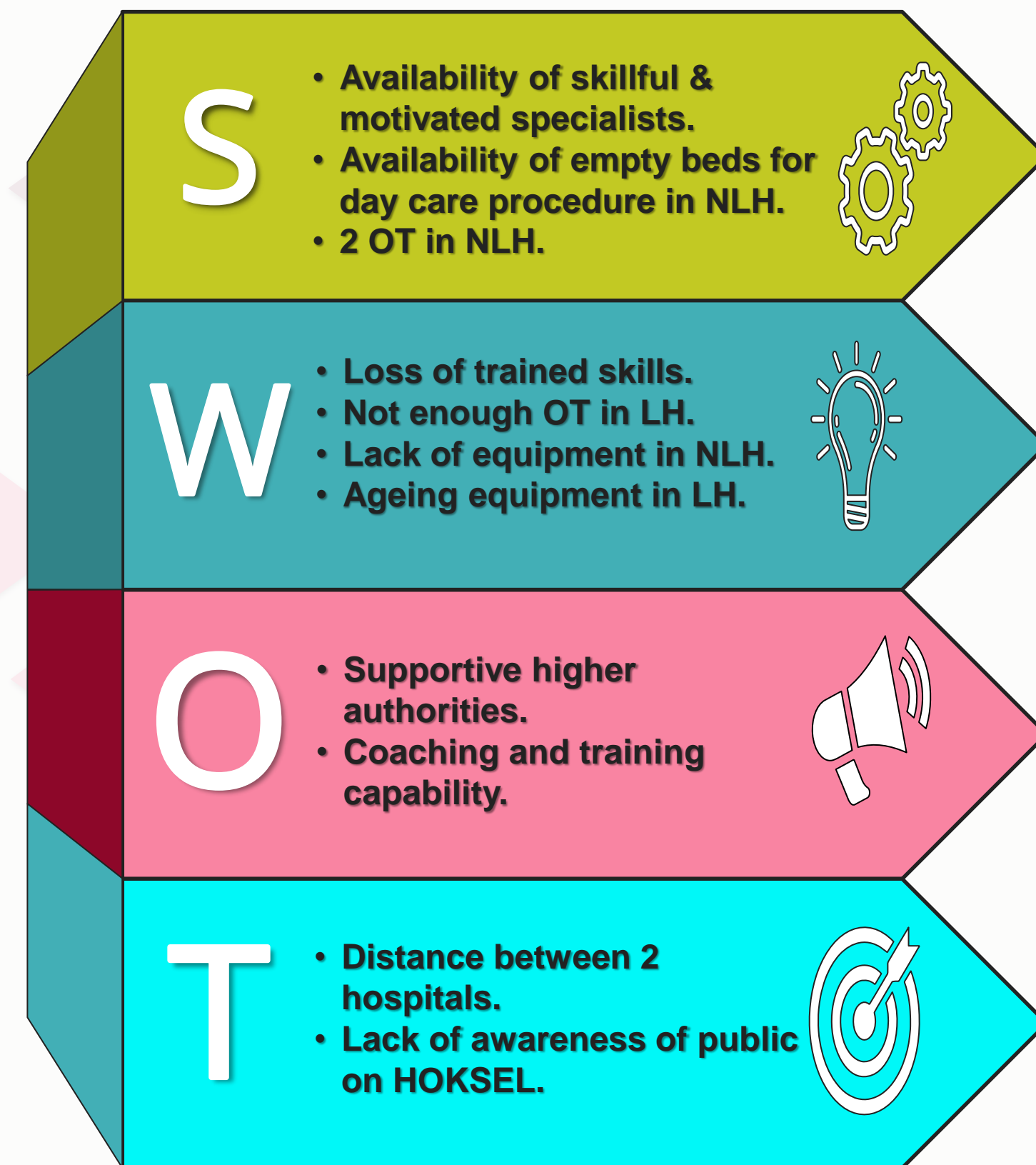
AFFILIATIONS : 1 - Hospital Kulim. 2 - Hospital Baling.

1. INTRODUCTION

HOKSEL is a Typical Cluster, formed in 2020



2. SWOT ANALYSIS



3. STRATEGIES

Based on Donabedian's model¹ for quality-of-care evaluation, 3 measures are implemented;



Reference :
1: Donabedian A. The Quality of Care: How Can It Be Assessed? JAMA. 1988;260(12):1743-1748. doi:10.1001/jama.1988.03410120089033

5. ACHIEVEMENTS

1. Niche Services in NLH

- Daycare cataract operation performed:

2020	2021	2022
69	462	854

- Daycare AVF operation performed:

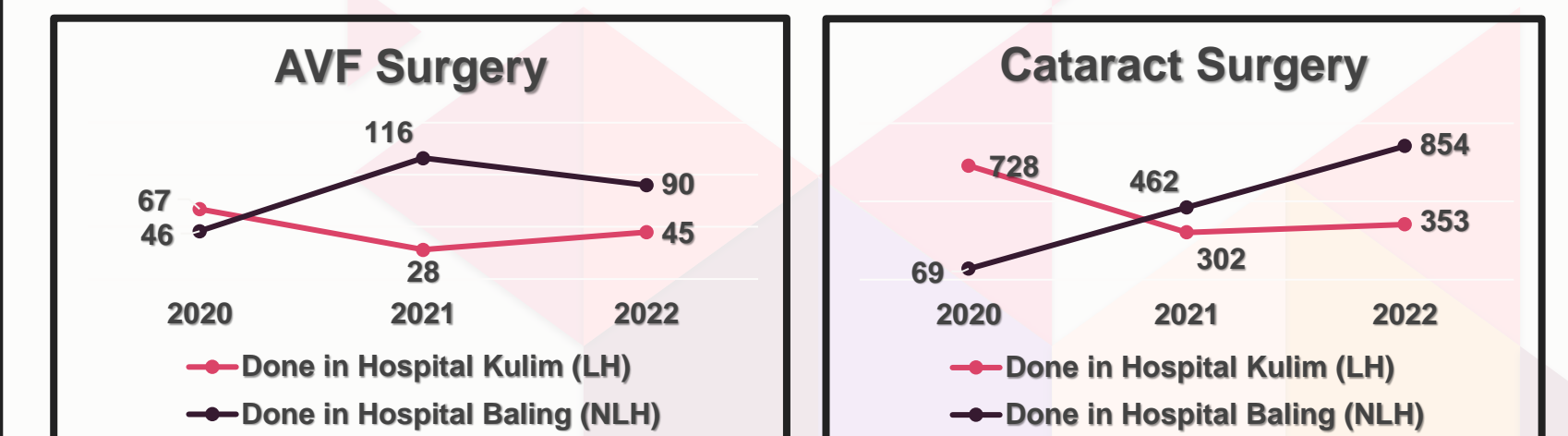
2020	2021	2022
46	116	90

- GA Daycare.

2. Improvement of OT waiting time for AVF & Cataract in southern kedah :

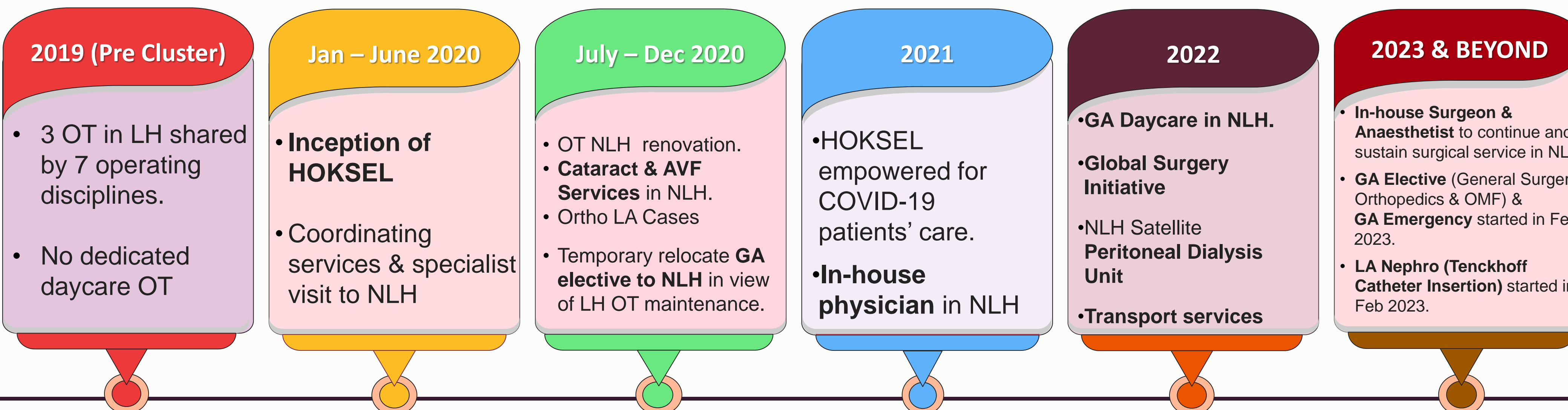
TYPE OF OPERATION	2019 (PRE-HOKSEL)	2022
CATARACT	9 months	1 month
AVF	4 months	1 month

3. Reduction in number of AVF and cataract surgeries done in LH:



4. DEVELOPMENT OF HOKSEL SERVICES & GLOBAL SURGERY INITIATIVE

“Turn your obstacles into opportunities and your problems into possibilities” Roy T. Bennett



4. Knowledge & skills transfer through visits, attachments and niche services.

CATEGORY	REMARKS
MO	9 MO attachment in LH (multidiscipline)
PARAMEDIC	8 paramedics (OT Trained)

6. CONCLUSION

Implementation of Global Surgery Initiative in Southern Kedah has been catalysed further by using Hospital Kluster Kedah Selatan. Since HOKSEL is well structured and global surgery provides value added benefit for patients in both Hospital Kulim & Hospital Baling, the implementation of this initiative can be sustained through HOKSEL.